

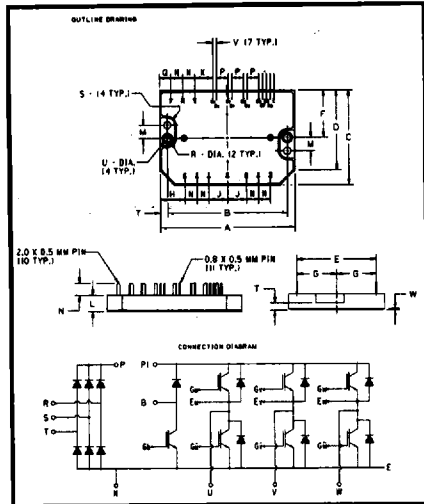
Powerex CIB™ IGBT Modules are new power integrated circuit products designed for use in motor drive applications. Each module consists of a complete three phase diode bridge for "front end" AC to DC rectification, a boost chopper configured IGBT and fast recovery diode for motor braking. Also included is the complete three

phase output inverter bridge using H-Series IGBTs and their associated 3rd generation fast and soft-recovery free-wheel diodes. Available types or those presently under development are indicated in the table below. For more detailed specifications, please contact the factory or your local manufacturers' representative.

CIB™ IGBT Selector Table

Type		CIB™ IGBT	
I_c (A)	V_{CES} (V)	600	1200
5			CM5MD-24H (C2)
10		CM10LD-12H (C1) CM10MD-12H (C2)	CM10MD-24H (C2)
15		CM15LD-12H(C1) CM15MD-12H (C2)	CM15MD-24H (C3)
20		CM20LD-12H (C1) CM20MD-12H (C2)	
25			CM25MD-24H (C3)
30		CM30MD-12H (C3)	
50		CM50MD-12H (C3)	

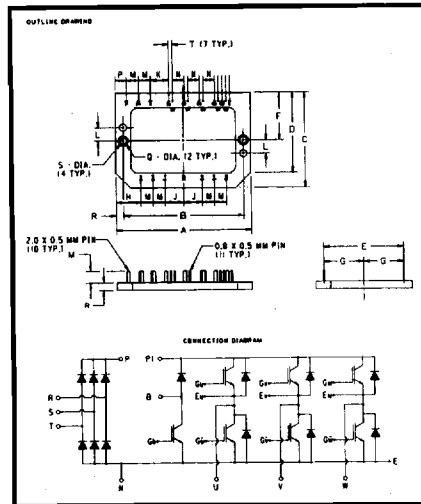
C1



Dimension	Inches	Millimeters
A	3.54 ± 0.02	90.0 ± 0.5
B	3.15 ± 0.01	80.0 ± 0.3
C	2.52 ± 0.02	64.0 ± 0.5
D	2.13	54.0
E	2.09 ± 0.02	53.0 ± 0.5
F	1.26	32.0
G	1.04 ± 0.01	26.5 ± 0.3
H	0.65	16.5
J	0.49	12.5
K	0.483	12.28
L	0.43 ± 0.01	11.0 ± 0.3
M	0.35 ± 0.004	9.0 ± 0.1
N	0.31	8.0
P	0.300	7.62
Q	0.30	7.5
R	0.27 Dia.	6.8 Dia.
S	0.20 Rad.	5.0 Rad.
T	0.20	5.0
U	0.19 ± 0.004 Dia.	4.8 ± 0.1 Dia.
V	0.100	2.54
W	0.04	1.0

CM10LD-12H, CM15LD-12H,
CM20LD-12H

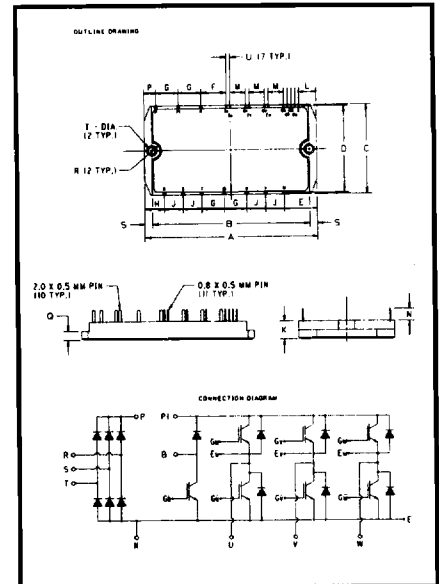
C2



Dimension	Inches	Millimeters
A	3.54 ± 0.02	90.0 ± 0.5
B	3.15 ± 0.01	80.0 ± 0.35
C	2.52 ± 0.02	64.0 ± 0.5
D	2.13	54.0
E	2.09 ± 0.02	53.0 ± 0.5
F	1.26	32.0
G	1.04 ± 0.01	26.5 ± 0.3
H	0.65	16.5
J	0.49	12.5
K	0.483	12.28
L	0.35 ± 0.004	9.0 ± 0.1
M	0.31	8.0
N	0.300	7.62
P	0.30	7.5
Q	0.27 Dia.	6.8 Dia.
R	0.20	5.0
S	0.019 ± 0.004 Dia.	4.8 ± 0.1 Dia.
T	0.100	2.54

CM10MD-12H, CM15MD-12H,
CM20MD-12H, CM5MD-24H,
CM10MD-24H

C3



Dimension	Inches	Millimeters
A	4.53	115.0
B	4.13	105.0
C	2.36	60.0
D	2.28	58.0
E	0.87	22.0
F	0.68	17.2
G	0.59	15.0
H	0.51	13.0
J	0.49	12.5
K	0.47	12.0
L	0.454	11.54
M	0.400	10.16
N	0.35	9.0
P	0.31	8.0
Q	0.24	6.0
R	0.22 Rad.	5.5 Rad.
S	0.20	5.0
T	0.18 Dia.	4.5 Dia.
U	0.100	2.54

CM30MD-12H, CM50MD-12H,
CM15MD-24H, CM25MD-24H