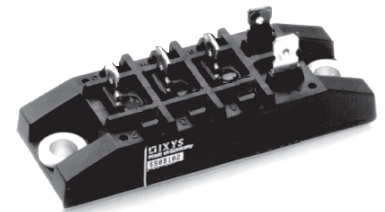
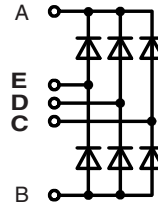


Three Phase Rectifier Bridge

$I_{dAV} = 70 \text{ A}$
 $V_{RRM} = 1600 \text{ V}$

V_{RSM}	V_{RRM}	Types
V	V	
1700	1600	VUO 70-16NO7



Symbol	Conditions	Maximum Ratings	
I_{dAV}^*	$T_C = 100^\circ\text{C}$, module	70	A
I_{FSM}	$T_{VJ} = 45^\circ\text{C}$ $V_R = 0$	$t = 10 \text{ ms}$ (50 Hz), sine	550 A
		$t = 8.3 \text{ ms}$ (60 Hz), sine	600 A
	$T_{VJ} = T_{VJM}$ $V_R = 0$	$t = 10 \text{ ms}$ (50 Hz), sine	500 A
		$t = 8.3 \text{ ms}$ (60 Hz), sine	550 A
I^2t	$T_{VJ} = 45^\circ\text{C}$ $V_R = 0$	$t = 10 \text{ ms}$ (50 Hz), sine	1520 A^2s
		$t = 8.3 \text{ ms}$ (60 Hz), sine	1520 A^2s
T_{VJ}			-40...+150 $^\circ\text{C}$
			150 $^\circ\text{C}$
T_{VJM}			-40...+125 $^\circ\text{C}$
T_{stg}			
V_{ISOL}	50/60 Hz, RMS $I_{ISOL} \leq 1 \text{ mA}$	$t = 1 \text{ min}$	2500 V~
		$t = 1 \text{ s}$	3000 V~
M_d	Mounting torque (M5) (10-32 UNF)		5 $\pm 15\%$ Nm
			44 $\pm 15\%$ lb.in.
Weight	typ.	110	g

Features

- Package with copper base plate
- Isolation voltage 3000 V~
- Planar passivated chips
- Low forward voltage drop
- ¼" fast-on power terminals

Applications

- Supplies for DC power equipment
- Input rectifiers for PWM inverter
- Battery DC power supplies
- Field supply for DC motors

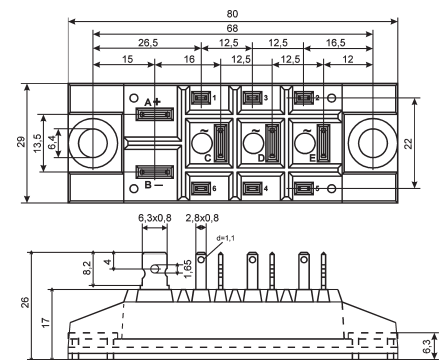
Advantages

- Easy to mount with two screws
- Space and weight savings
- Improved temperature and power cycling capability
- Small and light weight

Symbol	Conditions	Characteristic Values	
I_R	$V_R = V_{RRM}$ $V_R = V_{RRM}$	$T_{VJ} = 25^\circ\text{C}$	$\leq 0.5 \text{ mA}$
		$T_{VJ} = T_{VJM}$	$\leq 10 \text{ mA}$
V_F	$I_F = 150 \text{ A}$ $T_{VJ} = 25^\circ\text{C}$	\leq	1.7 V
V_{T0}	For power-loss calculations only		0.8 V
r_T			8 $\text{m}\Omega$
R_{thJC}	per diode; DC current per module		1.45 KW/K
			0.242 KW/K
R_{thJH}	per diode, DC current per module		1.9 KW/K
			0.317 KW/K
d_s	Creeping distance on surface	16.1	mm
d_A	Creepage distance in air	7.5	mm
a	Max. allowable acceleration	50	m/s^2

Data according to IEC 60747 refer to a single diode unless otherwise stated
 * for resistive load at bridge output

Dimensions in mm (1 mm = 0.0394")



IXYS reserves the right to change limits, test conditions and dimensions.

20100709a

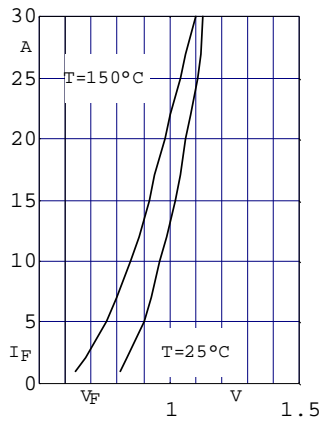


Fig. 1 Forward current versus voltage drop per diode

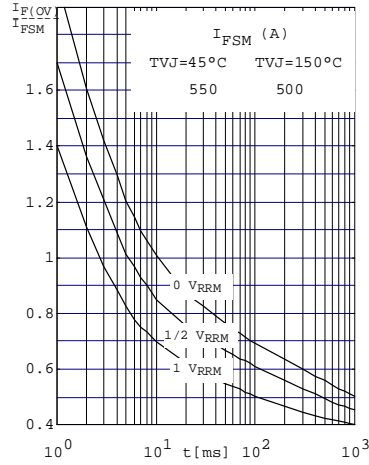


Fig. 2 Surge overload current per diode I_{FSM} : Crest value. t : duration

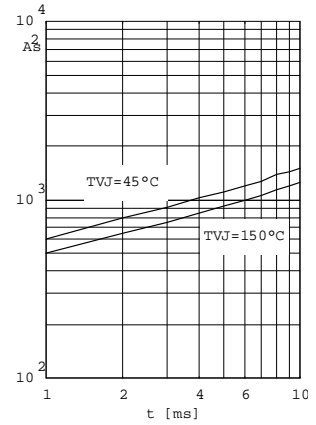


Fig. 3 I^2t versus time (1-10ms) per diode or thyristor

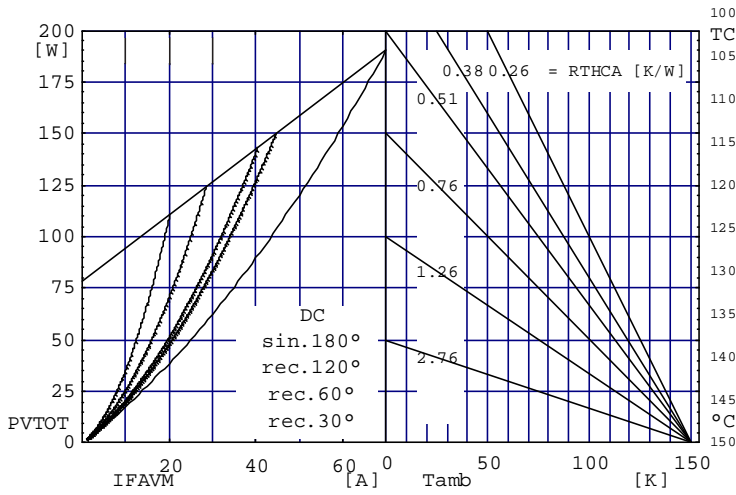


Fig. 4 Power dissipation versus direct output current and ambient temperature

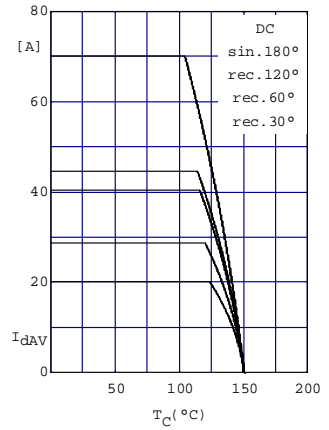


Fig. 5 Maximum forward current at case temperature

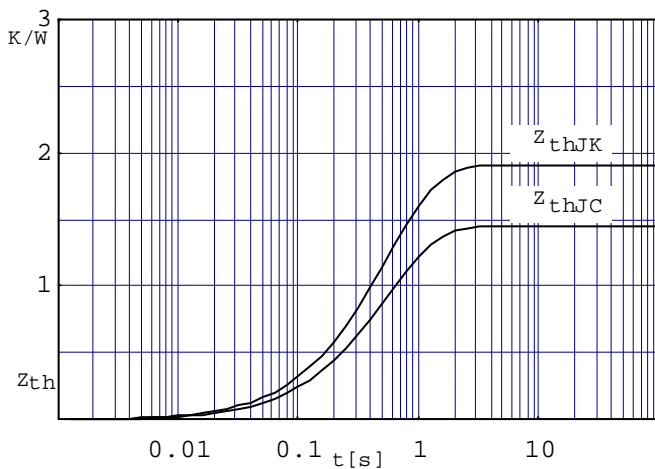


Fig. 6 Transient thermal impedance per diode/thyristor, calculated

Mouser Electronics

Authorized Distributor

Click to View Pricing, Inventory, Delivery & Lifecycle Information:

[IXYS:](#)

[VUO70-16NO7](#)